

cincoze

CV-100 Series

User Manual



Convertible Display Module

8.4" - 24" TFT-LCD Display Module

Contents

Preface	3
Revision	3
Copyright Notice	3
Acknowledgement	3
Disclaimer.....	3
Declaration of Conformity.....	4
Product Warranty Statement	4
Technical Support and Assistance	5
Conventions Used in this Manual	6
Safety Precautions.....	6
Package Contents	7
Ordering Information	10
Chapter 1 Product Introductions	13
1.1 Overview	14
1.2 Key Features.....	14
1.3 Hardware Specification	15
1.3.1 CV-108R/CV-108C	15
1.3.2 CV-110R/CV-110C	17
1.3.3 CV-110HR/CV-110HC	19
1.3.4 CV-112HR/CV-112HC	21
1.3.5 CV-115R/CV-115C/CV-115C-AG.....	23
1.3.6 CV-W115R/CV-W115C	25
1.3.7 CV-W115FHR/CV-W115FHC	27
1.3.8 CV-117R/CV-117C/CV-117G	29
1.3.9 CV-119R/CV-119C/CV-119G	31
1.3.10 CV-W121R/CV-W121C/CV-W121C-AG/CV-W121G.....	33
1.3.11 CV-W124R/CV-W124C/CV-W124G.....	35
Chapter 2 System Setup	37
2.1 Connecting with PC Module or Monitor Module	38
2.2 Installing Panel Mount	40

Preface

Revision

Revision	Description	Date
1.00	Manual Released	2014/10/20
1.10	CV-110H and CV-112H Product Info and Mechanical Dimensions Added	2015/12/10
1.20	Corrections made	2016/04/12
1.30	Added panel mount guide	2016/06/29
1.40	Added New CV-100 Series Products Information	2018/09/07
1.50	Corrections made	2018/10/17
1.60	CV-W124 Product Info and Mechanical Dimensions Added	2019/01/14
1.70	CV-108C Product Info and Mechanical Dimensions Added	2019/02/15
1.80	CV-W124G Product Info and Mechanical Dimensions Added	2019/05/17
1.81	New Format Updated	2020/10/22
1.82	Partial model revised	2022/08/19
1.83	Correction Made	2024/01/30
1.84	CV-110H Product Info Updated	2024/10/30
1.85	Power Spec Updated	2024/12/31
1.86	Add CV-W115FH & CV-115C-AG Display Module	2025/03/24
1.87	Add CV-W121C-AG Display Module	2025/05/29

Copyright Notice

© 2014 by Cincoze Co., Ltd. All rights are reserved. No parts of this manual may be copied, modified, or reproduced in any form or by any means for commercial use without the prior written permission of Cincoze Co., Ltd. All information and specification provided in this manual are for reference only and remain subject to change without prior notice.

Acknowledgement

Cincoze is a registered trademark of Cincoze Co., Ltd. All registered trademarks and product names mentioned herein are used for identification purposes only and may be trademarks and/or registered trademarks of their respective owners.

Disclaimer

This manual is intended to be used as a practical and informative guide only and is subject to change without notice. It does not represent a commitment on the part of Cincoze. This product

might include unintentional technical or typographical errors. Changes are periodically made to the information herein to correct such errors, and these changes are incorporated into new editions of the publication.

Declaration of Conformity



FCC

This equipment has been tested and found to comply with the limits for a Class A digital device, pursuant to Part 15 of the FCC Rules. These limits are designed to provide reasonable protection against harmful interference when the equipment is operated in a commercial environment. This equipment generates, uses, and can radiate radio frequency energy and, if not installed and used in accordance with the instruction manual, may cause harmful interference to radio communications. Operation of this equipment in a residential area is likely to cause harmful interference in which case the user will be required to correct the interference at his own expense.



CE

The product(s) described in this manual complies with all application European Union (CE) directives if it has a CE marking. For computer systems to remain CE compliant, only CE-compliant parts may be used. Maintaining CE compliance also requires proper cable and cabling techniques.



RU

UL Recognized Components have been evaluated by UL for factory installation within equipment where the component's limitations of use are known and investigated by UL.

UL Recognized Components have conditions of acceptability that describe how components can be used within end products.

Product Warranty Statement

Warranty

Cincoze products are warranted by Cincoze Co., Ltd. to be free from defect in materials and workmanship for 2 years (2 Years for PC Module, 1 Year for Display Module) from the date of purchase by the original purchaser. During the warranty period, we shall, at our option, either repair or replace any product that proves to be defective under normal operation. Defects, malfunctions, or failures of the warranted product caused by damage resulting from natural disasters (such as by lightening, flood, earthquake, etc.), environmental and atmospheric disturbances, other external forces such as power line disturbances, plugging the board in under power, or incorrect cabling, and damage caused by misuse, abuse, and unauthorized alteration or repair, and the product in

question is either software, or an expendable item (such as a fuse, battery, etc.), are not warranted.

RMA

Before sending your product in, you will need to fill in Cincoze RMA Request Form and obtain a RMA number from us. Our staff is available at any time to provide you with the most friendly and immediate service.

■ **RMA Instruction**

- Customers must fill in Cincoze Return Merchandise Authorization (RMA) Request Form and obtain an RMA number prior to returning a defective product to Cincoze for service.
- Customers must collect all the information about the problems encountered and note anything abnormal and describe the problems on the "Cincoze Service Form" for the RMA number apply process.
- Charges may be incurred for certain repairs. Cincoze will charge for repairs to products whose warranty period has expired. Cincoze will also charge for repairs to products if the damage resulted from acts of God, environmental or atmospheric disturbances, or other external forces through misuse, abuse, or unauthorized alteration or repair. If charges will be incurred for a repair, Cincoze lists all charges, and will wait for customer's approval before performing the repair.
- Customers agree to ensure the product or assume the risk of loss or damage during transit, to prepay shipping charges, and to use the original shipping container or equivalent.
- Customers can be sent back the faulty products with or without accessories (manuals, cable, etc.) and any components from the system. If the components were suspected as part of the problems, please note clearly which components are included. Otherwise, Cincoze is not responsible for the devices/parts.
- Repaired items will be shipped along with a "Repair Report" detailing the findings and actions taken.

Limitation of Liability

Cincoze' liability arising out of the manufacture, sale, or supplying of the product and its use, whether based on warranty, contract, negligence, product liability, or otherwise, shall not exceed the original selling price of the product. The remedies provided herein are the customer's sole and exclusive remedies. In no event shall Cincoze be liable for direct, indirect, special or consequential damages whether based on contract of any other legal theory.

Technical Support and Assistance

1. Visit the Cincoze website at www.cincoze.com where you can find the latest information about the product.
2. Contact your distributor or our technical support team or sales representative for technical

support if you need additional assistance. Please have following information ready before you call:

- Product name and serial number
- Description of your peripheral attachments
- Description of your software (operating system, version, application software, etc.)
- A complete description of the problem
- The exact wording of any error messages

Conventions Used in this Manual



WARNING
(AVERTIR)

This indication alerts operators to an operation that, if not strictly observed, may result in severe injury.

(Cette indication avertit les opérateurs d'une opération qui, si elle n'est pas strictement observée, peut entraîner des blessures graves.)



CAUTION
(ATTENTION)

This indication alerts operators to an operation that, if not strictly observed, may result in safety hazards to personnel or damage to equipment.

(Cette indication avertit les opérateurs d'une opération qui, si elle n'est pas strictement observée, peut entraîner des risques pour la sécurité du personnel ou des dommages à l'équipement.)



NOTE
(NOTE)

This indication provides additional information to complete a task easily.

(Cette indication fournit des informations supplémentaires pour effectuer facilement une tâche.)

Safety Precautions

Before installing and using this device, please note the following precautions.

1. Read these safety instructions carefully.
2. Keep this User's Manual for future reference.
3. Disconnect this equipment from any AC outlet before cleaning.
4. For plug-in equipment, the power outlet socket must be located near the equipment and must be easily accessible.
5. Keep this equipment away from humidity.
6. Put this equipment on a reliable surface during installation. Dropping it or letting it fall may cause damage.
7. Make sure the voltage of the power source is correct before connecting the equipment to the power outlet.
8. Use a power cord that has been approved for using with the product and that it matches the

voltage and current marked on the product's electrical range label. The voltage and current rating of the cord must be greater than the voltage and current rating marked on the product.

9. Position the power cord so that people cannot step on it. Do not place anything over the power cord.
10. All cautions and warnings on the equipment should be noted.
11. If the equipment is not used for a long time, disconnect it from the power source to avoid damage by transient overvoltage.
12. Never pour any liquid into an opening. This may cause fire or electrical shock.
13. Never open the equipment. For safety reasons, the equipment should be opened only by qualified service personnel.

If one of the following situations arises, get the equipment checked by service personnel:

- The power cord or plug is damaged.
- Liquid has penetrated into the equipment.
- The equipment has been exposed to moisture.
- The equipment does not work well, or you cannot get it work according to the user's manual.
- The equipment has been dropped and damaged.
- The equipment has obvious signs of breakage.

14. CAUTION: Risk of Explosion if Battery is replaced by an Incorrect Type. Dispose of Used Batteries According to the Instructions.

ATTENTION: Risque d'explosion si la batterie est remplacée par un type incorrect. Mettre au rebus les batteries usagées selon les instructions.

15. Equipment intended only for use in a RESTRICTED ACCESS AREA.
16. Ensure to connect the power cord of power adapter to a socket-outlet with earthing connection.
17. Dispose of used battery promptly. Keep away from children. Do not disassemble and do not dispose of in fire.

Package Contents

Before installation, please ensure all the items listed in the following table are included in the package.

CV-108R / CV-108C

Item	Description	Q'ty
1	CV-108 Display Module	1
2	Panel Mounting Kit	1

CV-110R / CV-110C

Item	Description	Q'ty
1	CV-110 Display Module	1
2	Panel Mounting Kit	1

CV-110HR / CV-110HC

Item	Description	Q'ty
1	CV-110H Display Module	1
2	Panel Mounting Kit	1

CV-112HR / CV-112HC

Item	Description	Q'ty
1	CV-112H Display Module	1
2	Panel Mounting Kit	1

CV-115R / CV-115C / CV-115C-AG

Item	Description	Q'ty
1	CV-115 Display Module	1
2	Panel Mounting Kit	1

CV-W115R / CV-W115C

Item	Description	Q'ty
1	CV-W115 Display Module	1
2	Panel Mounting Kit	1

CV-W115FHR / CV-W115FHC

Item	Description	Q'ty
1	CV-W115FH Display Module	1
2	Panel Mounting Kit	1

CV-117R / CV-117C / CV-117G

Item	Description	Q'ty
1	CV-117 Display Module	1
2	Panel Mounting Kit	1

CV-119R / CV-119C / CV-119G

Item	Description	Q'ty
1	CV-119 Display Module	1
2	Panel Mounting Kit	1

CV-W121R / CV-W121C / CV-W121C-AG / CV-W121G

Item	Description	Q'ty
1	CV-W121 Display Module	1
2	Panel Mounting Kit	1

CV-W124R / CV-W124C / CV-W124G

Item	Description	Q'ty
1	CV-W124 Display Module	1
2	Panel Mounting Kit	1

Note: Notify your sales representative if any of the above items are missing or damaged.

Ordering Information

Display Module with Resistive 5-wire Touch

Model No.	Product Description
CV-108R	8.4" TFT SVGA 4:3 Display Module with Resistive 5-wire Touch
CV-110R	10.4" TFT SVGA 4:3 Display Module with Resistive 5-wire Touch
CV-110HR	10.4" TFT XGA 4:3 Display Module with Resistive 5-wire Touch
CV-112HR	12.1" TFT XGA 4:3 Display Module with Resistive 5-wire Touch
CV-115R	15" TFT XGA 4:3 Display Module with Resistive 5-wire Touch
CV-W115R	15.6" TFT WXGA 16:9 Display Module with Resistive 5-wire Touch
CV-W115FHR	15.6" TFT-LCD Full HD 16:9 Display Module with Resistive 5-wire Touch
CV-117R	17" TFT SXGA 5:4 Display Module with Resistive 5-wire Touch
CV-119R	19" TFT SXGA 5:4 Display Module with Resistive 5-wire Touch
CV-W121R	21.5" TFT Full HD 16:9 Display Module with Resistive 5-wire Touch
CV-W124R	24" TFT Full HD 16:9 Display Module with Resistive 5-wire Touch

Display Module with Projected Capacitive Touch

Model No.	Product Description
CV-108C	8.4" TFT SVGA 4:3 Display Module with Projected Capacitive Touch
CV-110C	10.4" TFT SVGA 4:3 Display Module with Projected Capacitive Touch
CV-110HC	10.4" TFT XGA 4:3 Display Module with Projected Capacitive Touch
CV-112HC	12.1" TFT XGA 4:3 Display Module with Projected Capacitive Touch
CV-115C	15" TFT XGA 4:3 Display Module with Projected Capacitive Touch
CV-115C-AG	15" TFT XGA 4:3 Display Module with Projected Capacitive Touch and Anti-Glare Coating
CV-W115C	15.6" TFT WXGA 16:9 Display Module with Projected Capacitive Touch
CV-W115FHC	15.6" TFT-LCD Full HD 16:9 Display Module with Projected Capacitive Touch
CV-117C	17" TFT SXGA 5:4 Display Module with Projected Capacitive Touch
CV-119C	19" TFT SXGA 5:4 Display Module with Projected Capacitive Touch
CV-W121C	21.5" TFT Full HD 16:9 Display Module with Projected Capacitive Touch
CV-W121C-AG	21.5" TFT Full HD 16:9 Display Module with Projected Capacitive Touch and Anti-Glare Coating
CV-W124C	24" TFT Full HD 16:9 Display Module with Projected Capacitive Touch

Display Module with Glass

Model No.	Product Description
CV-117G	17" TFT SXGA 5:4 Display Module with Glass
CV-119G	19" TFT SXGA 5:4 Display Module with Glass
CV-W121G	21.5" TFT Full HD 16:9 Display Module with Glass
CV-W124G	24" TFT Full HD 16:9 Display Module with Glass

A vertical bar on the left side of the page, consisting of a yellow upper half and a black lower half.

Chapter 1

Product Introductions

1.1 Overview

CV-100 Series is LCD display module with resistive 5-wire touch, projected capacitive touch, or glass only (available on selected models). CV-100 Series features flat surface and IP65 dust/waterproof front panel. In addition, designed with aluminum die-cast front frame, it is rugged and reliable for industrial environment. With support for Convertible Display System (CDS) technology, CV-100 Series allows you to configure, upgrade and maintain your Convertible Display System easily.

1.2 Key Features

- 8.4" ~ 24" TFT-LCD with Resistive / P-CAP / P-CAP (AG) / Glass Only
- Designed with Rugged Aluminum Die-casting Front Bezel
- True Flat IP65 Front Panel Protection
- Convertible Display System (CDS) Technology Supported

1.3 Hardware Specification

1.3.1 CV-108R/CV-108C

Model Name	CV-108R	CV-108C
Display		
LCD Size	• 8.4" (4:3)	
Max. Resolution	• 800 x 600	
Brightness (cd/m2)	• 400	
Contrast Ratio	• 600 : 1	
LCD Color	• 262K	
Pixel Pitch(mm)	• 0.213 (H) x 0.213 (V)	
Viewing Angle (H-V)	• 150 / 130	
Backlight MTBF	• 30,000 hrs (LED Backlight)	
Touchscreen		
Touch Type	• Resistive 5-wire	• Projected Capacitive
Physical		
Dimension (WxDxH)	• 262 x 186.2 x 56.2mm	
Weight	• 1.62kg	• 1.58kg
Mechanical Construction	• Die-Casting Flat Surface	
Power		
Power Consumption	• 4.93W (Max.)	• 4.88W (Max.)
Environment		
Front Panel Protection	• IP 65 Compliant	
Operating Temperature	• -20°C to 70°C (with Industrial Grade peripherals; Ambient with air flow)	
Storage Temperature	• -30°C to 80°C	• -20°C to 70°C
Relative Humidity	• 80% RH @ 50°C (Non-condensing)	• 85% RH @ 50°C (Non-condensing)
EMC	• CE, UKCA, FCC, ICES-003 Class A	
EMI	• CISPR 32 Conducted & Radiated: Class A • EN/BS EN 55032 Conducted & Radiated: Class A • EN/BS EN IEC 61000-3-2 Harmonic current emissions: Class A • EN/BS EN61000-3-3 Voltage fluctuations & flicker • FCC 47 CFR Part 15B, ICES-003 Conducted & Radiated: Class A	
EMS	• EN/IEC 61000-4-2 ESD: Contact: 4 kV; Air: 8 kV • EN/IEC 61000-4-3 RS: 80 MHz to 1000 MHz: 3 V/m • EN/IEC 61000-4-4 EFT: AC Power: 1 kV; DC Power: 0.5 kV; Signal: 0.5 kV • EN/IEC 61000-4-5 Surges: AC Power: 2 kV; Signal: 1 kV • EN/IEC 61000-4-6 CS: 3V	

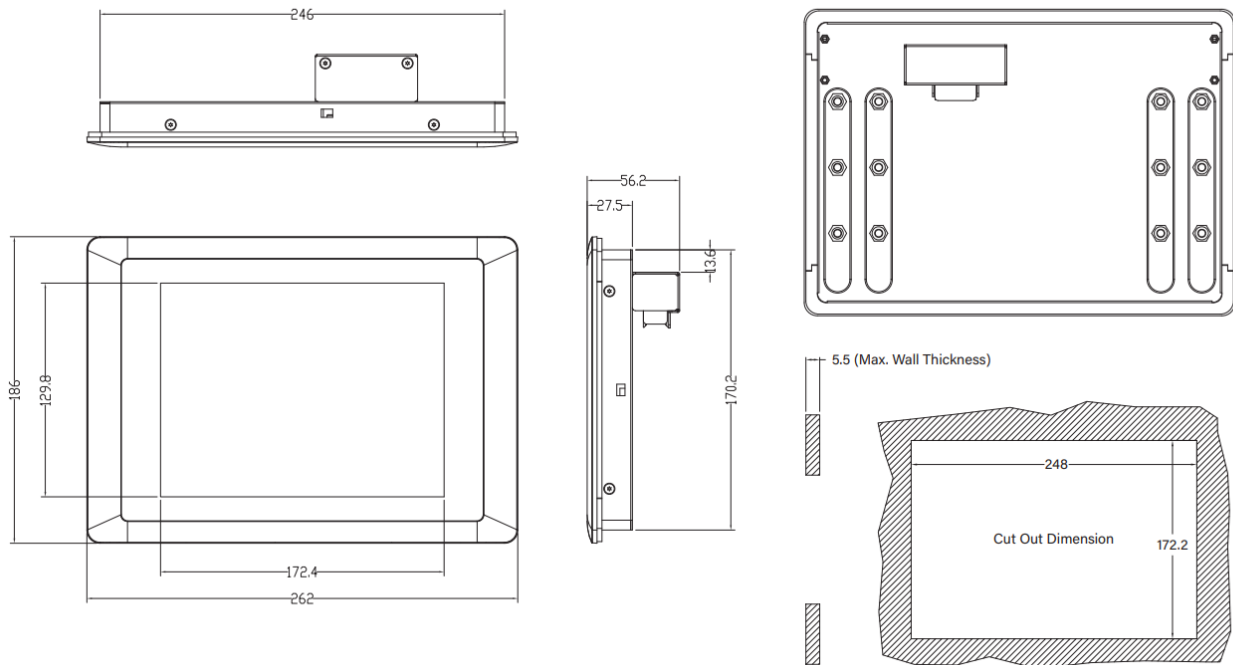
	<ul style="list-style-type: none"> • EN/IEC 61000-4-8 PFMF: 50 Hz, 1A/m • EN/IEC 61000-4-11 Voltage Dips & Voltage Interruptions: 0.5 cycles at 50 Hz
Safety	<ul style="list-style-type: none"> • UL, cUL, CB, IEC, EN 62368-1

** Product Specifications and features are for reference only and are subject to change without prior notice. For more information, please refer to the latest product datasheet from Cincoze's website.*

Dimension

CV-108R/CV-108C

Unit: mm



1.3.2 CV-110R/CV-110C

Model Name	CV-110R	CV-110C
Display		
LCD Size	• 10.4" (4:3)	
Max. Resolution	• 800 x 600	
Brightness (cd/m2)	• 400	
Contrast Ratio	• 700 : 1	
LCD Color	• 16.2M	
Pixel Pitch(mm)	• 0.264 (H) x 0.264 (V)	
Viewing Angle (H-V)	• 160 / 130	
Backlight MTBF	• 70,000 hrs (LED Backlight)	
Touchscreen		
Touch Type	• Resistive 5-wire	• Projected Capacitive
Physical		
Dimension (WxDxH)	• 295 x 227.3 x 56.2 mm	
Weight	• 2.24 kg	
Construction	• Die-Casting Flat Surface	
Power		
Power Consumption	• 3.38W (Typ.)	• 3.33W (Typ.)
Environment		
Front Panel Protection	• IP 65 Compliant	
Operating Temperature	• Ambient with Air flow: -20°C to 75°C (with Industrial Grade Peripherals)	• Ambient with Air flow: -10°C to 70°C (with Industrial Grade Peripherals)
Storage Temperature	• -30°C to 80°C	
Relative Humidity	• 80% RH @ 40°C (Non-condensing)	
EMC	• CE, UKCA, FCC, ICES-003 Class A	
EMI	• CISPR 32 Conducted & Radiated: Class A • EN/BS EN 55032 Conducted & Radiated: Class A • EN/BS EN IEC 61000-3-2 Harmonic current emissions: Class A • EN/BS EN61000-3-3 Voltage fluctuations & flicker • FCC 47 CFR Part 15B, ICES-003 Conducted & Radiated: Class A	
EMS	• EN/IEC 61000-4-2 ESD: Contact: 4 kV; Air: 8 kV • EN/IEC 61000-4-3 RS: 80 MHz to 1000 MHz: 3 V/m • EN/IEC 61000-4-4 EFT: AC Power: 1 kV; DC Power: 0.5 kV; Signal: 0.5 kV • EN/IEC 61000-4-5 Surges: AC Power: 2 kV; Signal: 1 kV • EN/IEC 61000-4-6 CS: 3V • EN/IEC 61000-4-8 PFMF: 50 Hz, 1A/m	

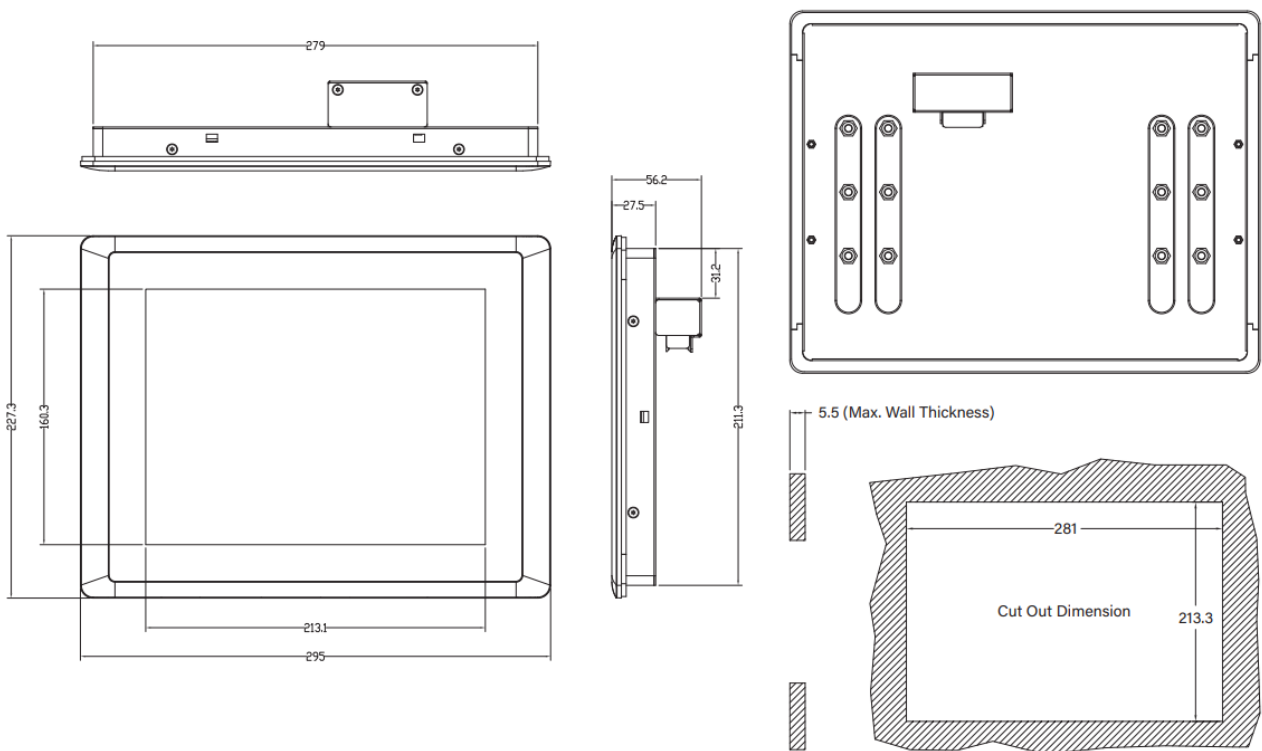
	<ul style="list-style-type: none"> EN/IEC 61000-4-11 Voltage Dips & Voltage Interruptions: 0.5 cycles at 50 Hz
Safety	<ul style="list-style-type: none"> UL, cUL, CB, IEC, EN 62368-1

** Product Specifications and features are for reference only and are subject to change without prior notice. For more information, please refer to the latest product datasheet from Cincoze's website.*

Dimension

CV-110R/CV-110C

Unit: mm



1.3.3 CV-110HR/CV-110HC

Model Name	CV-110HR	CV-110HC
Display		
LCD Size	• 10.4" (4:3)	
Max. Resolution	• 1024 x 768	
Brightness (cd/m2)	• 470	
Contrast Ratio	• 1000 : 1	
LCD Color	• 16.2M	
Pixel Pitch(mm)	• 0.2055 (H) x 0.2055 (V)	
Viewing Angle (H-V)	• 178 / 178	
Backlight MTBF	• 70,000 hrs (LED Backlight)	
Touchscreen		
Touch Type	• Resistive 5-wire	• Projected Capacitive
Physical		
Dimension (WxDxH)	• 295 x 227.3 x 56.2 mm	
Weight	• 2.24 kg	
Construction	• Die-Casting Flat Surface	
Power		
Power Consumption	• 4.99W (Typ.)	• 4.94W (Typ.)
Environment		
Front Panel Protection	• IP 65 Compliant	
Operating Temperature	• Ambient with Air flow: -20°C to 75°C (with Industrial Grade Peripherals)	• Ambient with Air flow: -10°C to 70°C (with Industrial Grade Peripherals)
Storage Temperature	• -30°C to 80°C	
Relative Humidity	• 80% RH @ 40°C (Non-condensing)	
EMC	• CE, UKCA, FCC, ICES-003 Class A	
EMI	• CISPR 32 Conducted & Radiated: Class A • EN/BS EN 55032 Conducted & Radiated: Class A • EN/BS EN IEC 61000-3-2 Harmonic current emissions: Class A • EN/BS EN61000-3-3 Voltage fluctuations & flicker • FCC 47 CFR Part 15B, ICES-003 Conducted & Radiated: Class A	
EMS	• EN/IEC 61000-4-2 ESD: Contact: 4 kV; Air: 8 kV • EN/IEC 61000-4-3 RS: 80 MHz to 1000 MHz: 3 V/m • EN/IEC 61000-4-4 EFT: AC Power: 1 kV; DC Power: 0.5 kV; Signal: 0.5 kV • EN/IEC 61000-4-5 Surges: AC Power: 2 kV; Signal: 1 kV • EN/IEC 61000-4-6 CS: 3V • EN/IEC 61000-4-8 PFMF: 50 Hz, 1A/m	

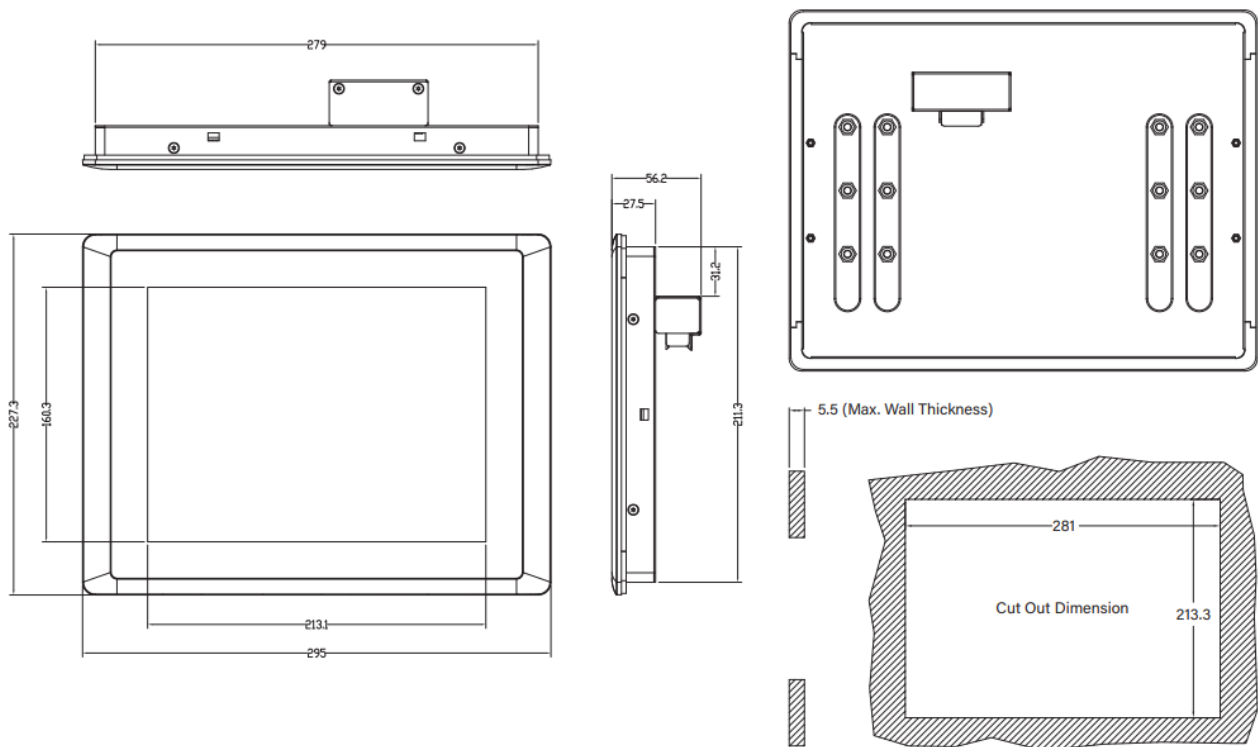
	<ul style="list-style-type: none"> • EN/IEC 61000-4-11 Voltage Dips & Voltage Interruptions: 0.5 cycles at 50 Hz
Safety	<ul style="list-style-type: none"> • UL, cUL, CB, IEC, EN 62368-1

** Product Specifications and features are for reference only and are subject to change without prior notice. For more information, please refer to the latest product datasheet from Cincoze's website.*

Dimension

CV-110HR/CV-110HC

Unit: mm



1.3.4 CV-112HR/CV-112HC

Model Name	CV-112HR	CV-112HC
Display		
LCD Size	• 12.1" (4:3)	
Max. Resolution	• 1024 x 768	
Brightness (cd/m2)	• 500	
Contrast Ratio	• 700 : 1	
LCD Color	• 16.2M	
Pixel Pitch(mm)	• 0.24 (H) x 0.24 (V)	
Viewing Angle (H-V)	• 160 / 160	
Backlight MTBF	• 30,000 hrs (LED Backlight)	
Touchscreen		
Touch Type	• Resistive 5-wire	• Projected Capacitive
Physical		
Dimension (WxDxH)	• 345 x 265.3 x 57 mm	
Weight	• 3.16 kg	
Construction	• Die-Casting Flat Surface	
Power		
Power Consumption	• 9.11W (Max.)	• 9.06W (Max.)
Environment		
Front Panel Protection	• IP 65 Compliant	
Operating Temperature	• Ambient with Air flow: -20°C to 75°C (with Industrial Grade Peripherals)	• Ambient with Air flow: -20°C to 80°C (with Industrial Grade Peripherals)
Storage Temperature	• -30°C to 80°C	
Relative Humidity	• 80% RH @ 40°C (Non-condensing)	
EMC	• CE, UKCA, FCC, ICES-003 Class A	
EMI	• CISPR 32 Conducted & Radiated: Class A • EN/BS EN 55032 Conducted & Radiated: Class A • EN/BS EN IEC 61000-3-2 Harmonic current emissions: Class A • EN/BS EN61000-3-3 Voltage fluctuations & flicker • FCC 47 CFR Part 15B, ICES-003 Conducted & Radiated: Class A	
EMS	• EN/IEC 61000-4-2 ESD: Contact: 4 kV; Air: 8 kV • EN/IEC 61000-4-3 RS: 80 MHz to 1000 MHz: 3 V/m • EN/IEC 61000-4-4 EFT: AC Power: 1 kV; DC Power: 0.5 kV; Signal: 0.5 kV • EN/IEC 61000-4-5 Surges: AC Power: 2 kV; Signal: 1 kV • EN/IEC 61000-4-6 CS: 3V • EN/IEC 61000-4-8 PFMF: 50 Hz, 1A/m	

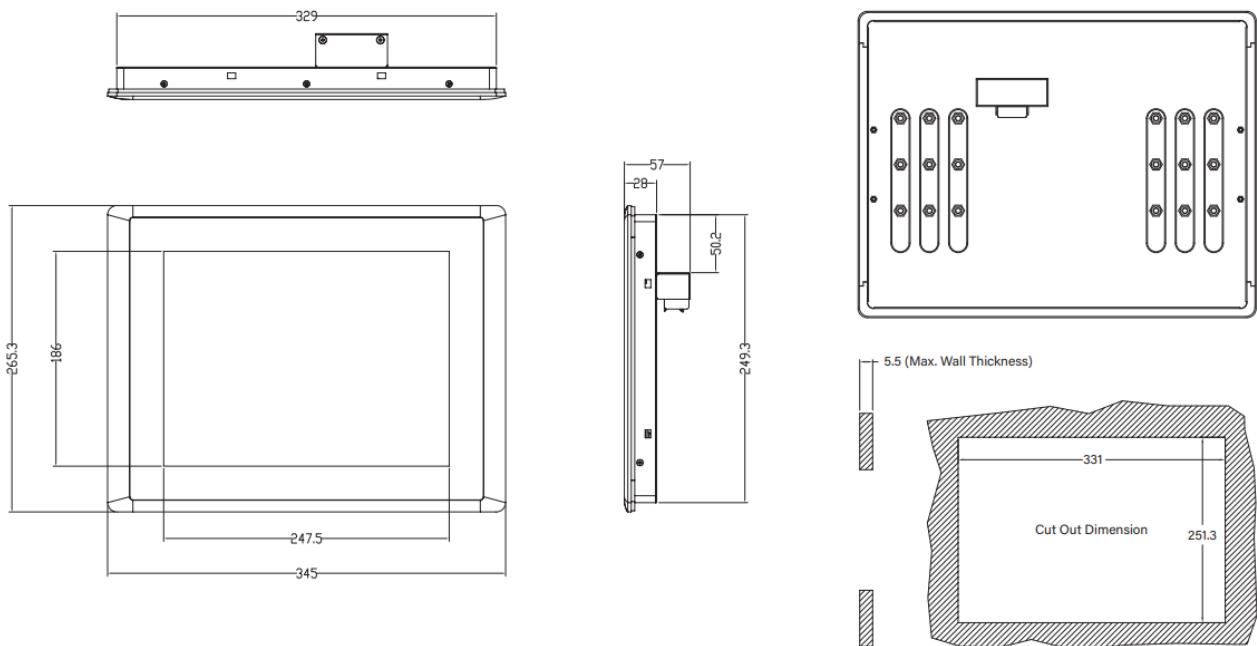
	<ul style="list-style-type: none"> • EN/IEC 61000-4-11 Voltage Dips & Voltage Interruptions: 0.5 cycles at 50 Hz
Safety	<ul style="list-style-type: none"> • UL, cUL, CB, IEC, EN 62368-1

** Product Specifications and features are for reference only and are subject to change without prior notice. For more information, please refer to the latest product datasheet from Cincoze's website.*

Dimension

CV-112HR/CV-112HC

Unit: mm



1.3.5 CV-115R/CV-115C/CV-115C-AG

Model Name	CV-115R		CV-115C	CV-115C-AG
Display				
LCD Size	• 15" (4:3)			
Max. Resolution	• 1024 x 768			
Brightness (cd/m2)	• 350			
Contrast Ratio	• 800 : 1			
LCD Color	• 16.2M			
Pixel Pitch(mm)	• 0.297 (H) x 0.297 (V)			
Viewing Angle (H-V)	• 160 / 150			
Backlight MTBF	• 50,000 hrs (LED Backlight)			
Touchscreen				
Touch Type	• Resistive 5-wire	• Projected Capacitive	• Projected Capacitive	
Anti-Glare			✓	
Physical				
Dimension (WxDxH)	• 408 x 312.4 x 59.2 mm			
Weight	• 4.36 kg			
Construction	• Die-Casting Flat Surface			
Power				
Power Consumption	• 8W (Max.)	• 7.95W (Max.)	• 7.95W (Max.)	
Environment				
Front Panel Protection	• IP 65 Compliant			
Operating Temperature	• 0°C to 65°C (with Industrial Grade peripherals; Ambient with air flow)			
Storage Temperature	• -20°C to 65°C			
Relative Humidity	• 80% RH @ 50°C (Non-condensing)			
EMC	• CE, UKCA, FCC, ICES-003 Class A			
EMI	• CISPR 32 Conducted & Radiated: Class A • EN/BS EN 55032 Conducted & Radiated: Class A • EN/BS EN IEC 61000-3-2 Harmonic current emissions: Class A • EN/BS EN61000-3-3 Voltage fluctuations & flicker • FCC 47 CFR Part 15B, ICES-003 Conducted & Radiated: Class A			
EMS	• EN/IEC 61000-4-2 ESD: Contact: 4 kV; Air: 8 kV • EN/IEC 61000-4-3 RS: 80 MHz to 1000 MHz: 3 V/m • EN/IEC 61000-4-4 EFT: AC Power: 1 kV; DC Power: 0.5 kV; Signal: 0.5 kV • EN/IEC 61000-4-5 Surges: AC Power: 2 kV; Signal: 1 kV • EN/IEC 61000-4-6 CS: 3V • EN/IEC 61000-4-8 PFMF: 50 Hz, 1A/m			

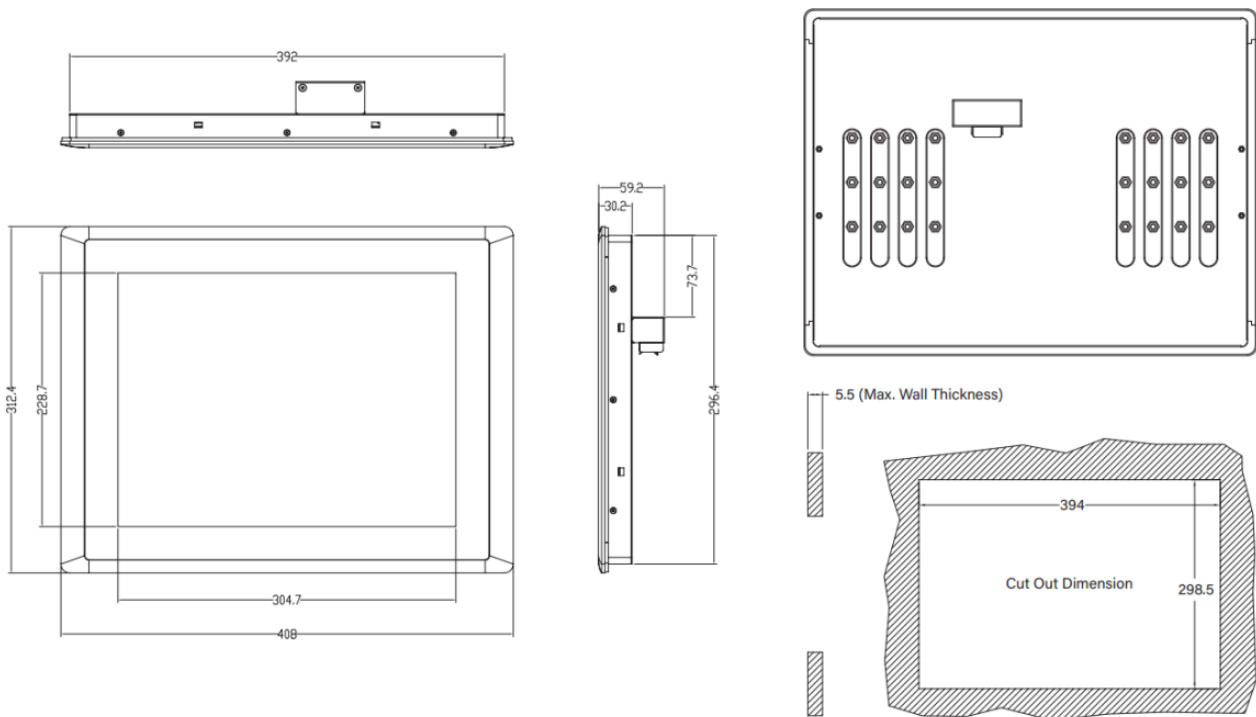
	<ul style="list-style-type: none"> • EN/IEC 61000-4-11 Voltage Dips & Voltage Interruptions: 0.5 cycles at 50 Hz
Safety	<ul style="list-style-type: none"> • UL, cUL, CB, IEC, EN 62368-1

** Product Specifications and features are for reference only and are subject to change without prior notice. For more information, please refer to the latest product datasheet from Cincoze's website.*

Dimension

CV-115R/CV-115C/CV-115C-AG

Unit: mm



1.3.6 CV-W115R/CV-W115C

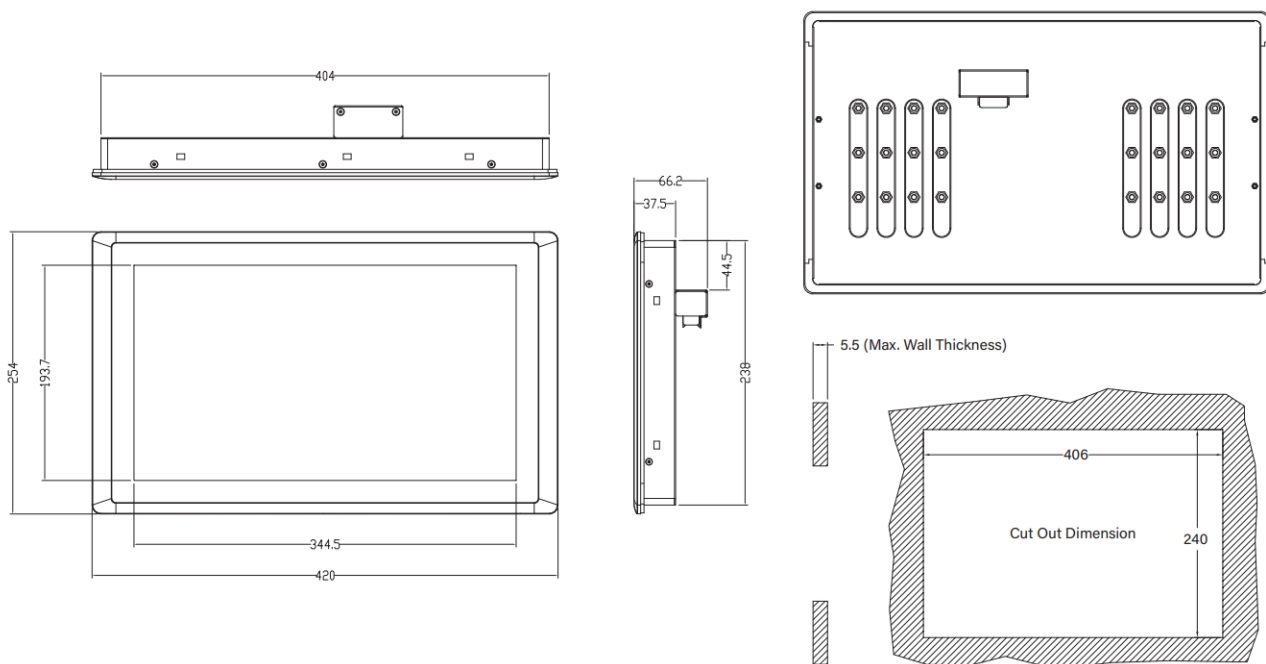
Model Name	CV-W115R		CV-W115C
Display			
LCD Size	• 15.6" (16:9)		
Max. Resolution	• 1366 x 768(WXGA)		
Brightness (cd/m2)	• 400		
Contrast Ratio	• 500 : 1		
LCD Color	• 16.2M		
Pixel Pitch(mm)	• 0.252 (H) x 0.252 (V)		
Viewing Angle (H-V)	• 170 / 160		
Backlight MTBF	• 50,000 hrs (LED Backlight)		
Touchscreen			
Touch Type	• Resistive 5-wire	• Projected Capacitive	
Physical			
Dimension (WxDxH)	• 420 x 254 x 66.2 mm		
Weight	• 4.25 kg		
Construction	• Die-Casting Flat Surface		
Power			
Power Consumption	• 11.5W (Max.)	• 11.45W (Max.)	
Environment			
Front Panel Protection	• IP 65 Compliant		
Operating Temperature	• Ambient with Air flow: 0°C to 60°C (with Industrial Grade Peripherals)		
Storage Temperature	• -20°C to 60°C		
Relative Humidity	• 80% RH @ 40°C (Non-condensing)		
EMC	• CE, UKCA, FCC, ICES-003 Class A		
EMI	• CISPR 32 Conducted & Radiated: Class A • EN/BS EN 55032 Conducted & Radiated: Class A • EN/BS EN IEC 61000-3-2 Harmonic current emissions: Class A • EN/BS EN61000-3-3 Voltage fluctuations & flicker • FCC 47 CFR Part 15B, ICES-003 Conducted & Radiated: Class A		
EMS	• EN/IEC 61000-4-2 ESD: Contact: 4 kV; Air: 8 kV • EN/IEC 61000-4-3 RS: 80 MHz to 1000 MHz: 3 V/m • EN/IEC 61000-4-4 EFT: AC Power: 1 kV; DC Power: 0.5 kV; Signal: 0.5 kV • EN/IEC 61000-4-5 Surges: AC Power: 2 kV; Signal: 1 kV • EN/IEC 61000-4-6 CS: 3V • EN/IEC 61000-4-8 PFMF: 50 Hz, 1A/m • EN/IEC 61000-4-11 Voltage Dips & Voltage Interruptions: 0.5 cycles at 50 Hz		

** Product Specifications and features are for reference only and are subject to change without prior notice. For more information, please refer to the latest product datasheet from Cincoze's website.*

Dimension

CV-W115R/CV-W115C

Unit: mm



1.3.7 CV-W115FHR/CV-W115FHC

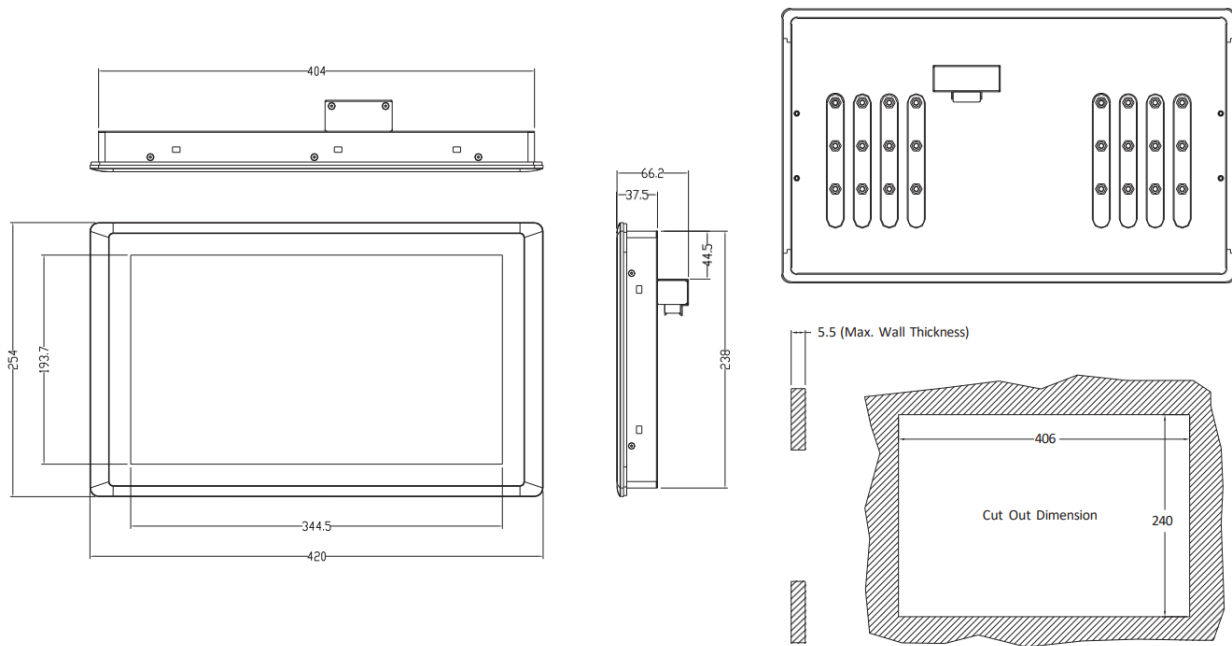
Model Name	CV-W115FHR		CV-W115FHC
Display			
LCD Size	• 15.6" (16:9)		
Max. Resolution	• 1920 x 1080 (Full HD)		
Brightness (cd/m2)	• 350		
Contrast Ratio	• 800 : 1		
LCD Color	• 16.7M		
Pixel Pitch(mm)	• 0.17925 (H) x 0.17925 (V)		
Viewing Angle (H-V)	• 178 / 178		
Backlight MTBF	• 50,000 hrs (LED Backlight)		
Touchscreen			
Touch Type	• Resistive 5-wire	• Projected Capacitive	
Physical			
Dimension (WxDxH)	• 420 x 254 x 66.2 mm		
Weight	• 3.78 kg	• 3.84 kg	
Construction	• Die-Casting Flat Surface		
Power			
Power Consumption	• 11.5W (Max.)	• 11.45W (Max.)	
Environment			
Front Panel Protection	• IP 65 Compliant		
Operating Temperature	• -20°C to 70°C (with Industrial Grade peripherals; Ambient with air flow)		
Storage Temperature	• -40°C to 80°C		
Relative Humidity	• 90% RH @ 39°C (Non-condensing)		
EMC	• CE, UKCA, FCC, ICES-003 Class A		
EMI	• CISPR 32 Conducted & Radiated: Class A • EN/BS EN 55032 Conducted & Radiated: Class A • EN/BS EN IEC 61000-3-2 Harmonic current emissions: Class A • EN/BS EN61000-3-3 Voltage fluctuations & flicker • FCC 47 CFR Part 15B, ICES-003 Conducted & Radiated: Class A		
EMS	• EN/IEC 61000-4-2 ESD: Contact: 4 kV; Air: 8 kV • EN/IEC 61000-4-3 RS: 80 MHz to 1000 MHz: 3 V/m • EN/IEC 61000-4-4 EFT: AC Power: 1 kV; DC Power: 0.5 kV; Signal: 0.5 kV • EN/IEC 61000-4-5 Surges: AC Power: 2 kV; Signal: 1 kV • EN/IEC 61000-4-6 CS: 3V • EN/IEC 61000-4-8 PFMF: 50 Hz, 1A/m • EN/IEC 61000-4-11 Voltage Dips & Voltage Interruptions: 0.5 cycles at 50 Hz		

** Product Specifications and features are for reference only and are subject to change without prior notice. For more information, please refer to the latest product datasheet from Cincoze's website.*

Dimension

CV-W115FHR/CV-W115FHC

Unit: mm



1.3.8 CV-117R/CV-117C/CV-117G

Model Name	CV-117R		CV-117C	CV-117G
Display				
LCD Size	• 17" (5:4)			
Max. Resolution	• 1280 x 1024			
Brightness (cd/m2)	• 350			
Contrast Ratio	• 800 : 1			
LCD Color	• 16.2M			
Pixel Pitch(mm)	• 0.264 (H) x 0.264 (V)			
Viewing Angle (H-V)	• 160 / 140			
Backlight MTBF	• 50,000 hrs (LED Backlight)			
Touchscreen				
Touch Type	• Resistive 5-wire	• Projected Capacitive	• Glass Screen	
Physical				
Dimension (WxDxH)	• 450 x 350 x 63.2 mm			
Weight	• 5.64 kg			
Mechanical Construction	• Die-Casting Flat Surface			
Power				
Power Consumption	• 18.9W (Max.)	• 18.85W (Max.)	• 18.4W (Max.)	
Environment				
Front Panel Protection	• IP 65 Compliant			
Operating Temperature	• Ambient with Air flow: -20°C to 75°C (with Industrial Grade Peripherals)	• Ambient with Air flow: -20°C to 80°C (with Industrial Grade Peripherals)	• Ambient with Air flow: -30°C to 85°C (with Industrial Grade Peripherals)	
Storage Temperature	• -30°C to 80°C			
Relative Humidity	• 80% RH @ 40°C (Non-condensing)			
EMC	• CE, UKCA, FCC, ICES-003 Class A			
EMI	• CISPR 32 Conducted & Radiated: Class A • EN/BS EN 55032 Conducted & Radiated: Class A • EN/BS EN IEC 61000-3-2 Harmonic current emissions: Class A • EN/BS EN61000-3-3 Voltage fluctuations & flicker • FCC 47 CFR Part 15B, ICES-003 Conducted & Radiated: Class A			
EMS	• EN/IEC 61000-4-2 ESD: Contact: 4 kV; Air: 8 kV • EN/IEC 61000-4-3 RS: 80 MHz to 1000 MHz: 3 V/m • EN/IEC 61000-4-4 EFT: AC Power: 1 kV; DC Power: 0.5 kV; Signal: 0.5 kV			

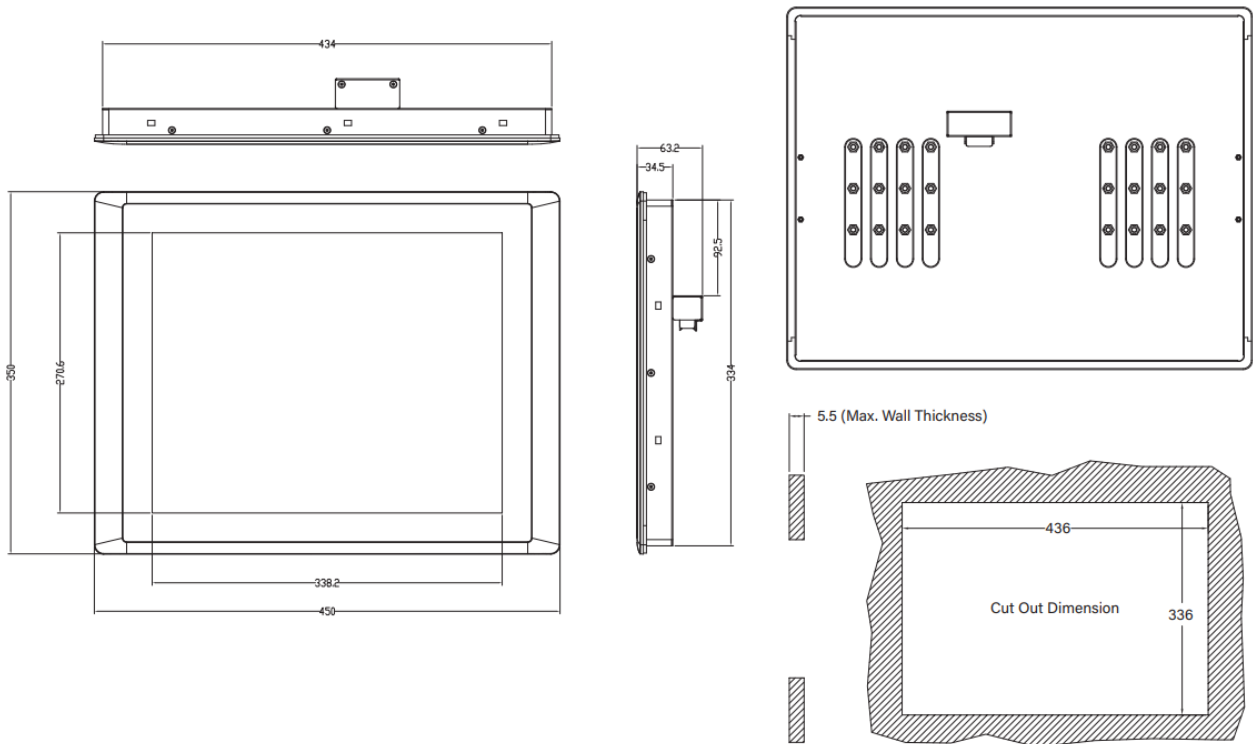
	<ul style="list-style-type: none"> • EN/IEC 61000-4-5 Surges: AC Power: 2 kV; Signal: 1 kV • EN/IEC 61000-4-6 CS: 3V • EN/IEC 61000-4-8 PFMF: 50 Hz, 1A/m • EN/IEC 61000-4-11 Voltage Dips & Voltage Interruptions: 0.5 cycles at 50 Hz
Safety	<ul style="list-style-type: none"> • UL, cUL, CB, IEC, EN 62368-1

** Product Specifications and features are for reference only and are subject to change without prior notice. For more information, please refer to the latest product datasheet from Cincoze's website.*

Dimension

CV-117R/CV-117C/CV-117G

Unit: mm



1.3.9 CV-119R/CV-119C/CV-119G

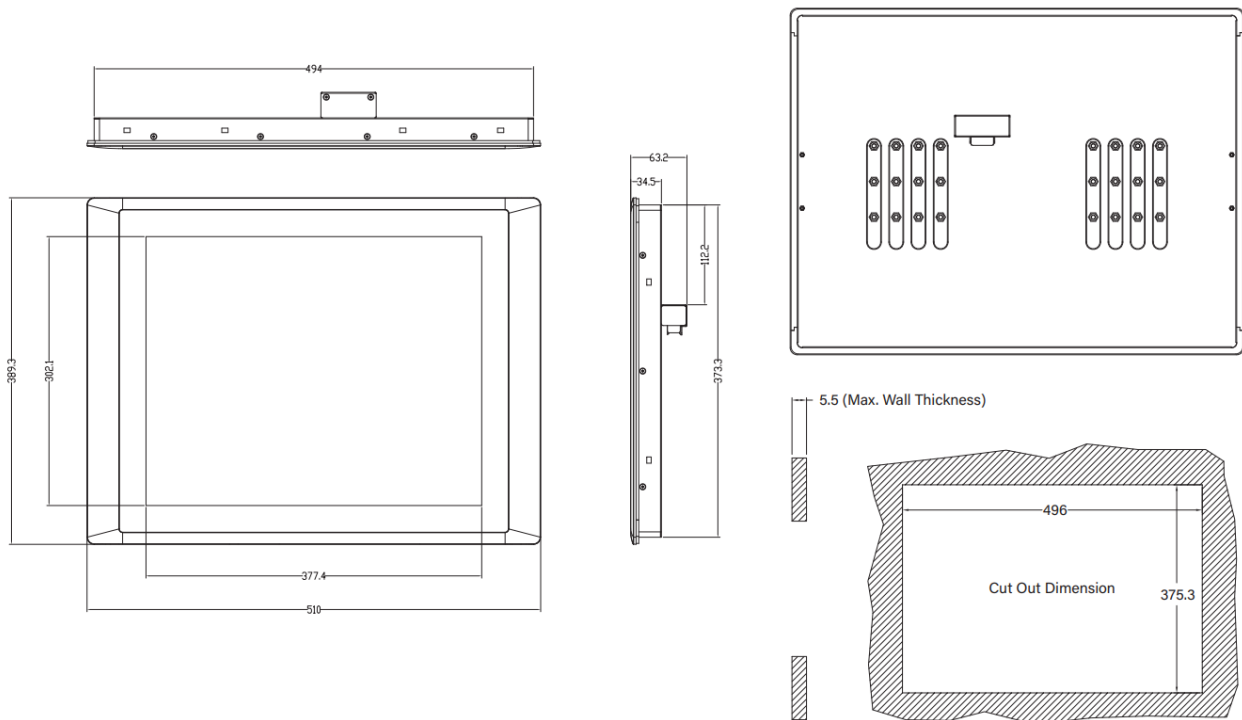
Model Name	CV-119R		CV-119C	CV-119G
Display				
LCD Size	• 19" (5:4)			
Max. Resolution	• 1280 x 1024			
Brightness (cd/m2)	• 350			
Contrast Ratio	• 1000 : 1			
LCD Color	• 16.7M			
Pixel Pitch(mm)	• 0.294 (H) x 0.294 (V)			
Viewing Angle (H-V)	• 170 / 160			
Backlight MTBF	• 50,000 hrs (LED Backlight)			
Touchscreen				
Touch Type	• Resistive 5-wire	• Projected Capacitive	• Glass Screen	
Physical				
Dimension (WxDxH)	• 510 x 389.3 x 63.2 mm			
Weight	• 6.96 kg			
Mechanical Construction	• Die-Casting Flat Surface			
Power				
Power Consumption	• 21.05W (Max.)	• 21W (Max.)	• 20.55W (Max.)	
Environment				
Front Panel Protection	• IP 65 Compliant			
Operating Temperature	• Ambient with Air flow: 0°C to 50°C (with Industrial Grade Peripherals)			
Storage Temperature	• -20°C to 60°C			
Relative Humidity	• 80% RH @ 50°C (Non-condensing)			
EMC	CE, UKCA, FCC, ICES-003 Class A			
EMI	• CISPR 32 Conducted & Radiated: Class A • EN/BS EN 55032 Conducted & Radiated: Class A • EN/BS EN IEC 61000-3-2 Harmonic current emissions: Class A • EN/BS EN61000-3-3 Voltage fluctuations & flicker FCC 47 CFR Part 15B, ICES-003 Conducted & Radiated: Class A			
EMS	• EN/IEC 61000-4-2 ESD: Contact: 4 kV; Air: 8 kV • EN/IEC 61000-4-3 RS: 80 MHz to 1000 MHz: 3 V/m • EN/IEC 61000-4-4 EFT: AC Power: 1 kV; DC Power: 0.5 kV; Signal: 0.5 kV • EN/IEC 61000-4-5 Surges: AC Power: 2 kV; Signal: 1 kV • EN/IEC 61000-4-6 CS: 3V • EN/IEC 61000-4-8 PFMF: 50 Hz, 1A/m EN/IEC 61000-4-11 Voltage Dips & Voltage Interruptions: 0.5 cycles at 50 Hz			

** Product Specifications and features are for reference only and are subject to change without prior notice. For more information, please refer to the latest product datasheet from Cincoze's website.*

Dimension

CV-119R/CV-119C/CV-119G

Unit: mm



1.3.10 CV-W121R/CV-W121C/CV-W121C-AG/CV-W121G

Model Name	CV-W121R	CV-W121C	CV-W121C-AG	CV-W121G
Display				
LCD Size	• 21.5" (16:9)			
Max. Resolution	• 1920 x 1080			
Brightness (cd/m2)	• 350			
Contrast Ratio	• 5000 : 1			
LCD Color	• 16.7M			
Pixel Pitch(mm)	• 0.24825 (H) x 0.24825 (V)			
Viewing Angle (H-V)	• 178 / 178			
Backlight MTBF	• 50,000 hrs (LED Backlight)			
Touchscreen				
Touch Type	• Resistive 5-wire	• Projected Capacitive	• Projected Capacitive	• Glass Screen
Anti-Glare			✓	
Physical				
Dimension (WxDxH)	• 550 x 330.5 x 63.2 mm			
Weight	• 5.56 kg			
Mechanical Construction	• Die-Casting Flat Surface			
Power				
Power Consumption	• 24.85W (Max.)	• 24.8W (Max.)	• 24.8W (Max.)	• 24.35W (Max.)
Environment				
Front Panel Protection	• IP 65 Compliant			
Operating Temperature	• Ambient with Air flow: 0°C to 60°C (with Industrial Grade Peripherals)			
Storage Temperature	• -20°C to 60°C			
Relative Humidity	• 80% RH @ 40°C (Non-condensing)			
EMC	CE, UKCA, FCC, ICES-003 Class A			
EMI	• CISPR 32 Conducted & Radiated: Class A • EN/BS EN 55032 Conducted & Radiated: Class A • EN/BS EN IEC 61000-3-2 Harmonic current emissions: Class A • EN/BS EN61000-3-3 Voltage fluctuations & flicker • FCC 47 CFR Part 15B, ICES-003 Conducted & Radiated: Class A			
EMS	• EN/IEC 61000-4-2 ESD: Contact: 4 kV; Air: 8 kV • EN/IEC 61000-4-3 RS: 80 MHz to 1000 MHz: 3 V/m • EN/IEC 61000-4-4 EFT: AC Power: 1 kV; DC Power: 0.5 kV; Signal: 0.5 kV • EN/IEC 61000-4-5 Surges: AC Power: 2 kV; Signal: 1 kV • EN/IEC 61000-4-6 CS: 3V • EN/IEC 61000-4-8 PFMF: 50 Hz, 1A/m			

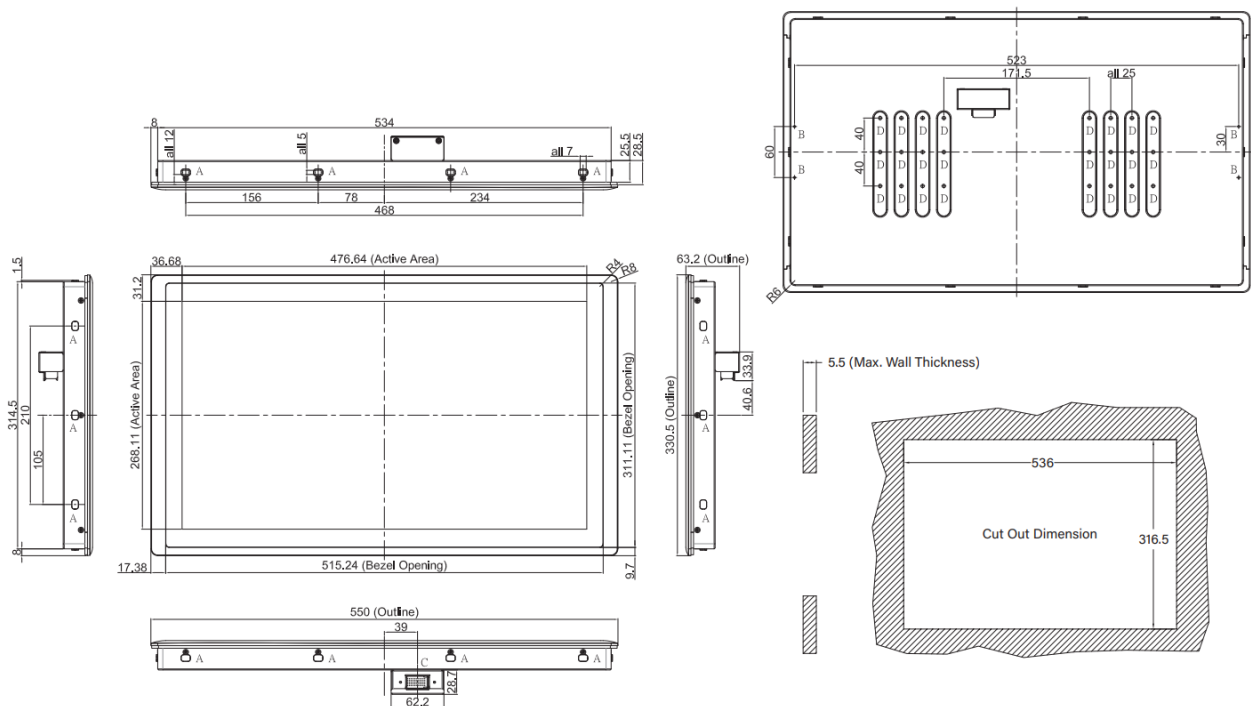
	<ul style="list-style-type: none"> EN/IEC 61000-4-11 Voltage Dips & Voltage Interruptions: 0.5 cycles at 50 Hz
Safety	<ul style="list-style-type: none"> UL, cUL, CB, IEC, EN 62368-1

** Product Specifications and features are for reference only and are subject to change without prior notice. For more information, please refer to the latest product datasheet from Cincoze's website.*

Dimension

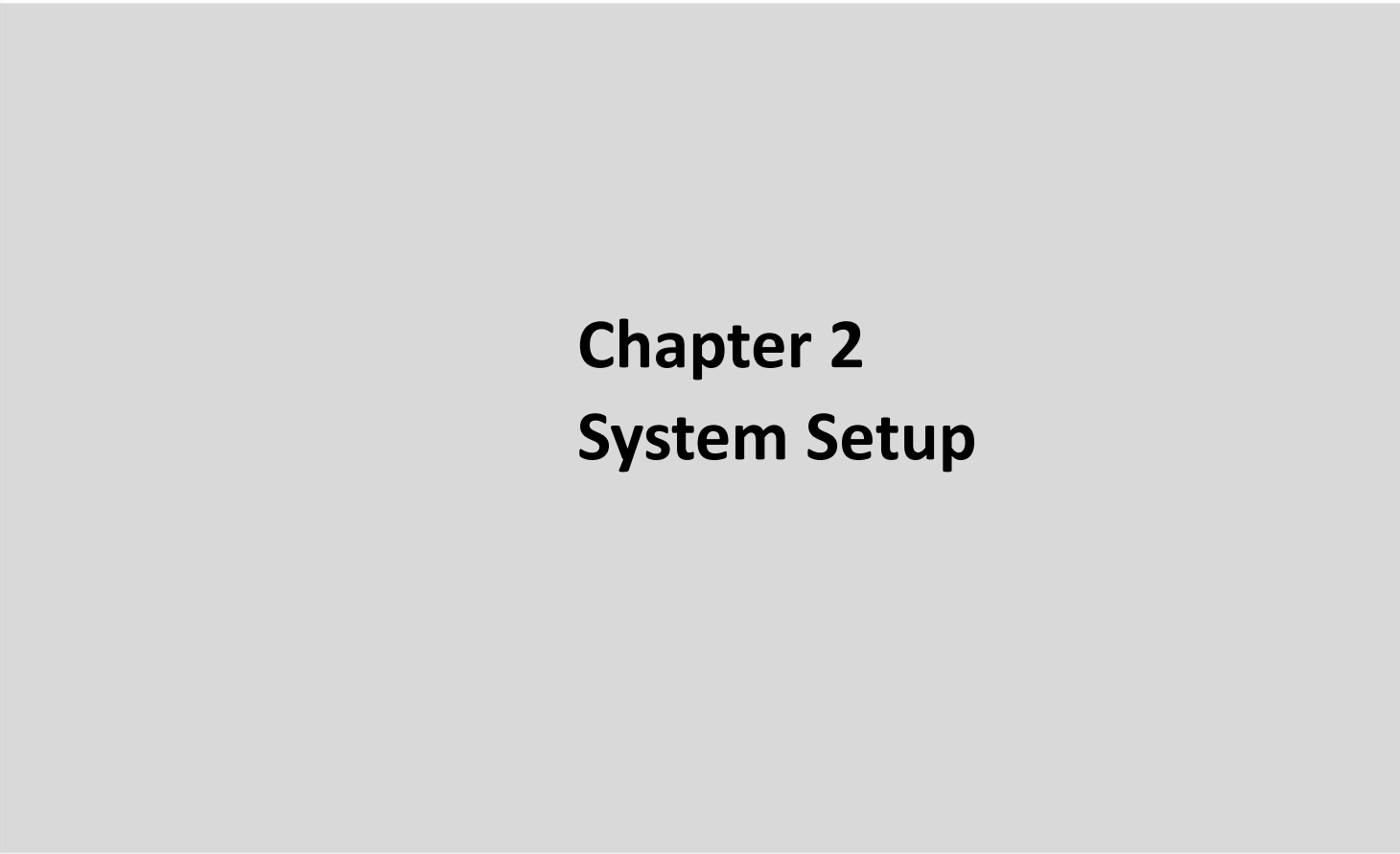

CV-W121R/CV-W121C/CV-W121G

Unit: mm



1.3.11 CV-W124R/CV-W124C/CV-W124G

Model Name	CV-W124R		CV-W124C	CV-W124G
Display				
LCD Size	• 24" (16:9)			
Max. Resolution	• 1920 x 1080			
Brightness (cd/m2)	• 350			
Contrast Ratio	• 5000 : 1			
LCD Color	• 16.7M			
Pixel Pitch(mm)	• 0.27675 (H) x 0.27675 (V)			
Viewing Angle (H-V)	• 178 / 178			
Backlight MTBF	• 50,000 hrs (LED Backlight)			
Touchscreen				
Touch Type	• Resistive 5-wire	• Projected Capacitive	• Glass Screen	
Physical				
Dimension (WxDxH)	• 605 x 373 x 63.2 mm			
Weight	• 6.92 kg	• 6.64 kg		
Mechanical Construction	• Die-Casting Flat Surface			
Power				
Power Consumption	• 23.8W (Max.)	• 23.75W (Max.)	• 23.3W (Max.)	
Environment				
Front Panel Protection	• IP 65 Compliant			
Operating Temperature	• Ambient with Air flow: -10°C to 60°C (with Industrial Grade Peripherals)	• Ambient with Air flow: -20°C to 70°C (with Industrial Grade Peripherals)		
Storage Temperature	• -20°C to 70°C	• -30°C to 80°C		
Relative Humidity	• 80% RH @ 50°C (Non-condensing)			
Vibration	• --	• Operating, 1 Grms, 10-500 Hz, 3 Axes (w/ P2102E only, according to IEC60068-2-6)	• --	
EMC	• CE, UKCA, FCC, ICES-003 Class A			
EMI	• CISPR 32 Conducted & Radiated: Class A • EN/BS EN 55032 Conducted & Radiated: Class A • EN/BS EN IEC 61000-3-2 Harmonic current emissions: Class A • EN/BS EN61000-3-3 Voltage fluctuations & flicker • FCC 47 CFR Part 15B, ICES-003 Conducted & Radiated: Class A			
EMS	• EN/IEC 61000-4-2 ESD: Contact: 4 kV; Air: 8 kV			



Chapter 2

System Setup

2.1 Connecting with PC Module or Monitor Module



WARNING
(AVERTIR)

In order to prevent electric shock or system damage, must turn off power and disconnect the unit from power source before removing the chassis cover.

(Afin d'éviter tout risque d'électrocution ou d'endommagement du système, vous devez couper l'alimentation et débrancher l'appareil de la source d'alimentation avant de retirer le couvercle du châssis.)

The photos show the male connector (on display module) and female connector (on PC module or monitor module)



PC module

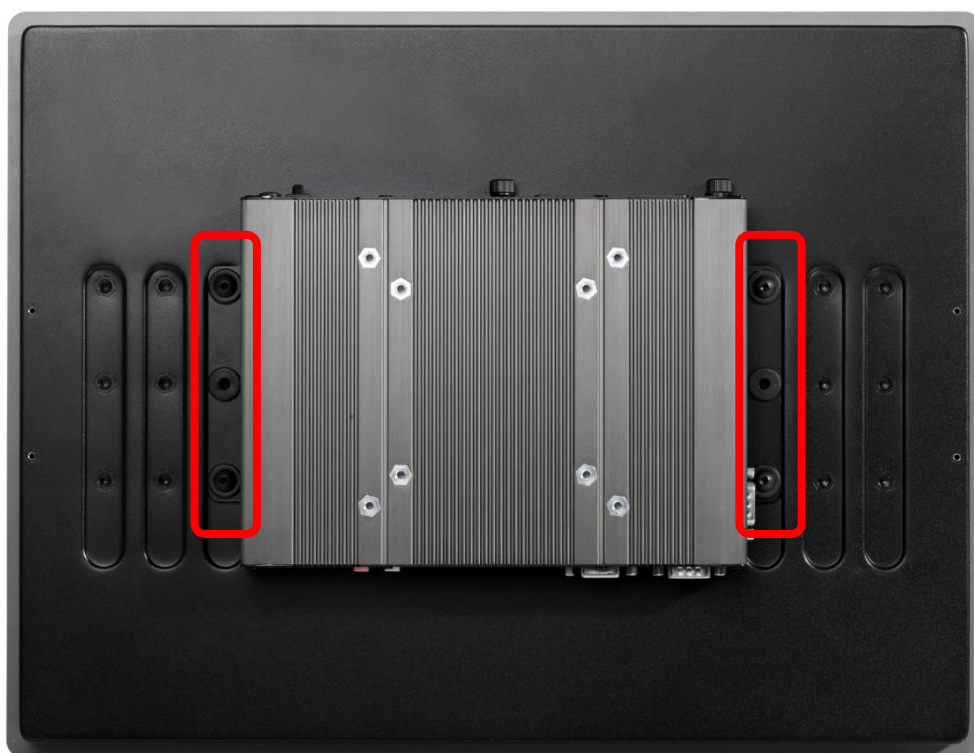


Monitor module

1. Connect the modules.

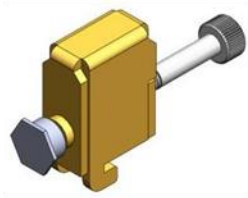


2. Fasten the 6 screws to fix the PC module or monitor module on the display module.

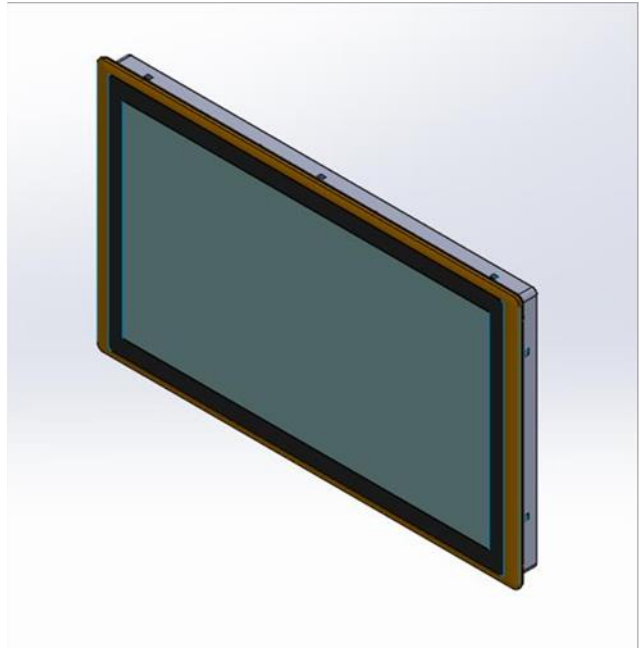


2.2 Installing Panel Mount

1. Accessories provided by Cincoze are as follows.



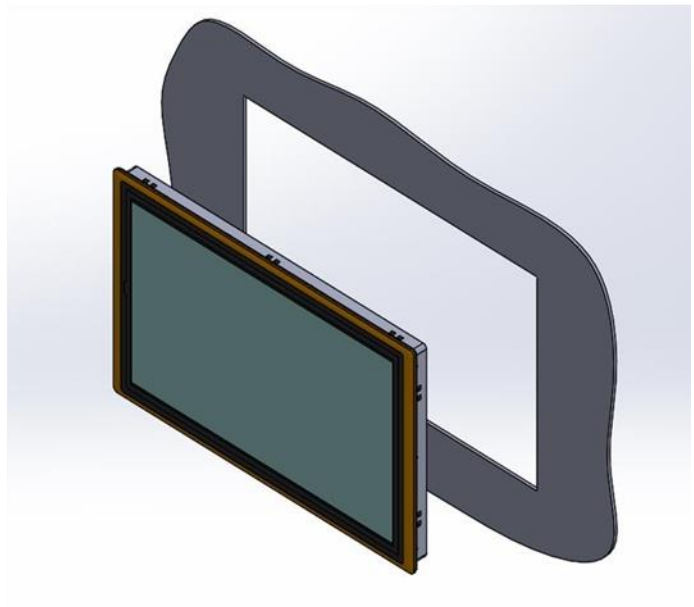
Mounting Kits



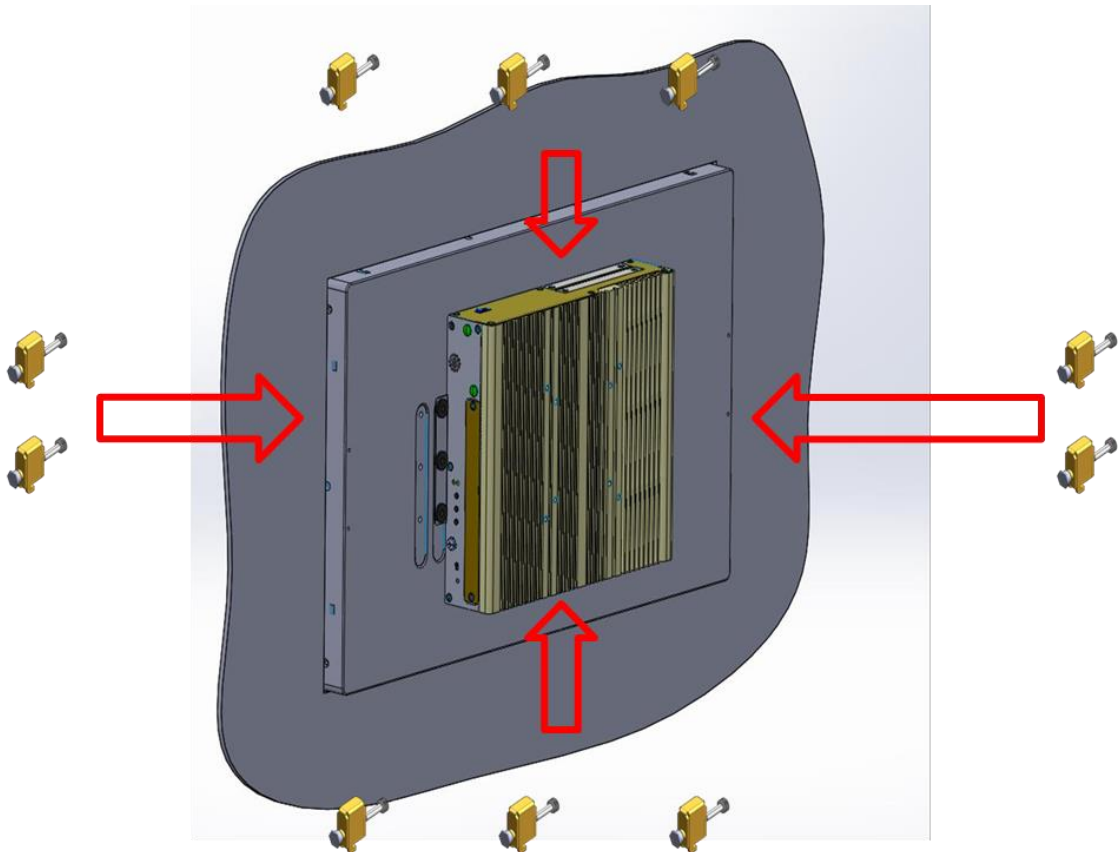
Panel Mount PPC

Before assembly, please prepare panel mount PPC and customer's fixture.

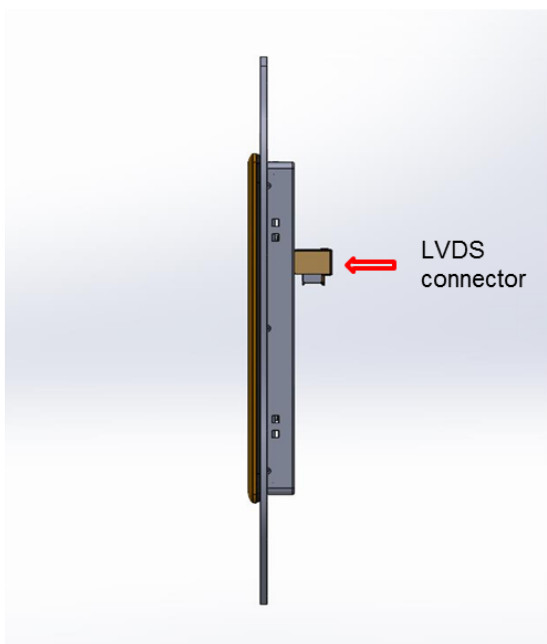
Panel Mount with customer's fixture
(Front View)



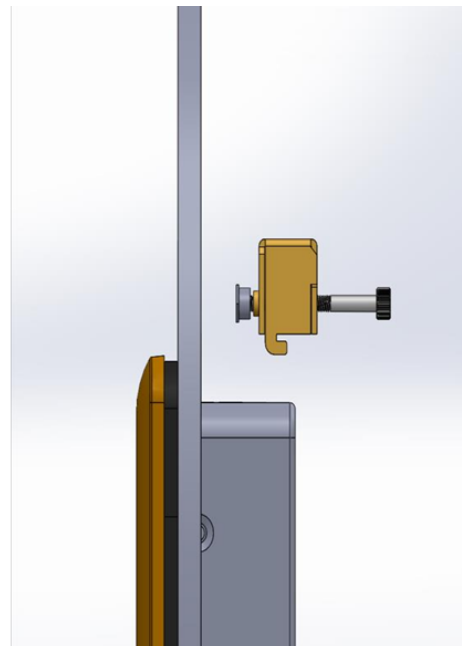
2. All mounting kits displayed are to be inserted into holes.



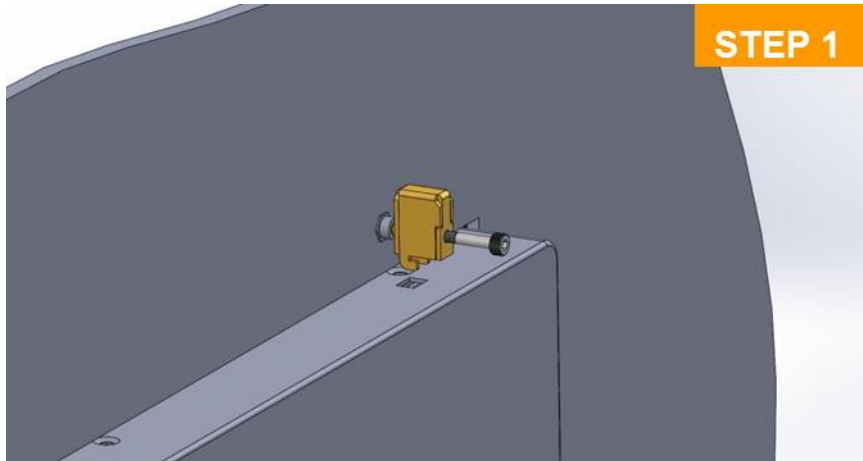
3. Installation preparation and steps.



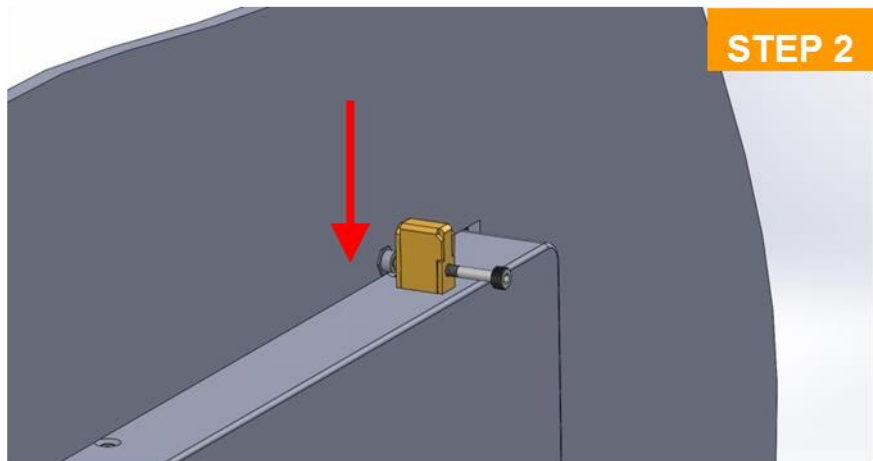
Panel mount side view with LVDS connector of CS series



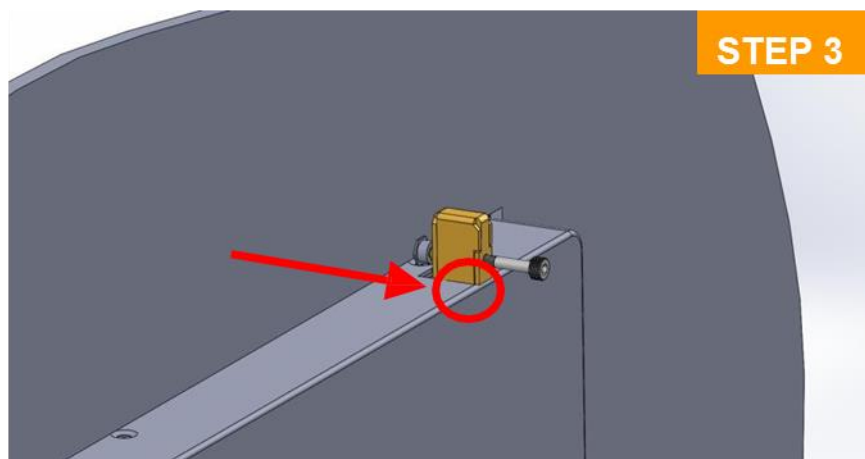
Before Mounting Kits are installed



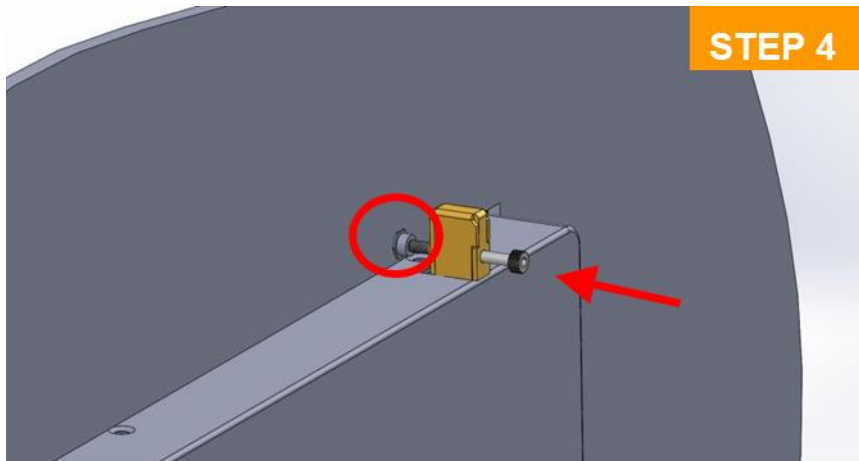
Position panel mountkits



Insert the panel mounting kit into bottom hole

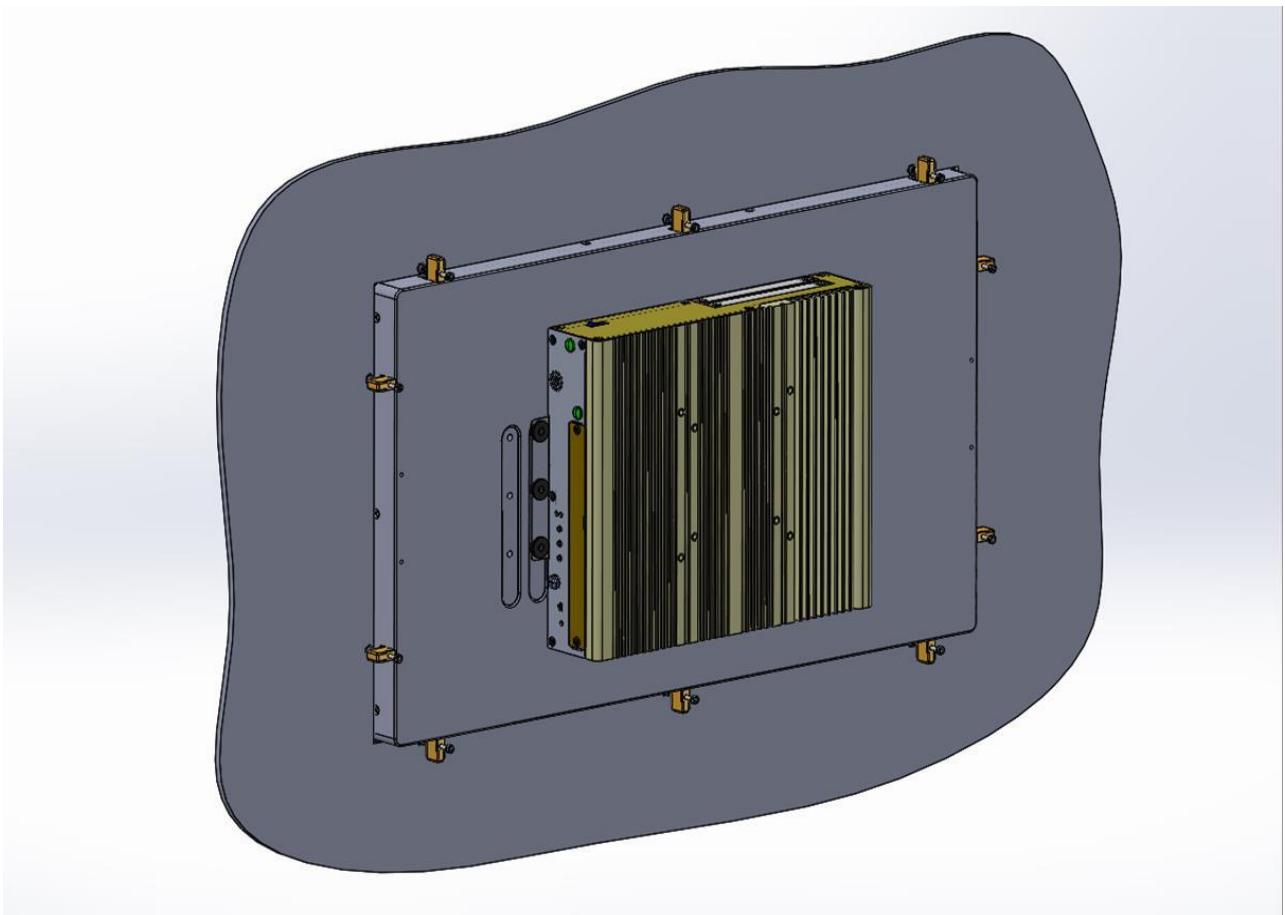


Slide the kit toward back



Tighten the screw forward until the front screw just touches the surface

4. Apply all mount kits to the rest of holes. And you have completed the panel mount installation, as shown below.





© 2014 Cincoze Co., Ltd. All rights reserved.

The Cincoze logo is a registered trademark of Cincoze Co., Ltd.

All other logos appearing in this catalog are the intellectual property of the respective company, product, or organization associated with the logo.

All product specifications and information are subject to change without notice.